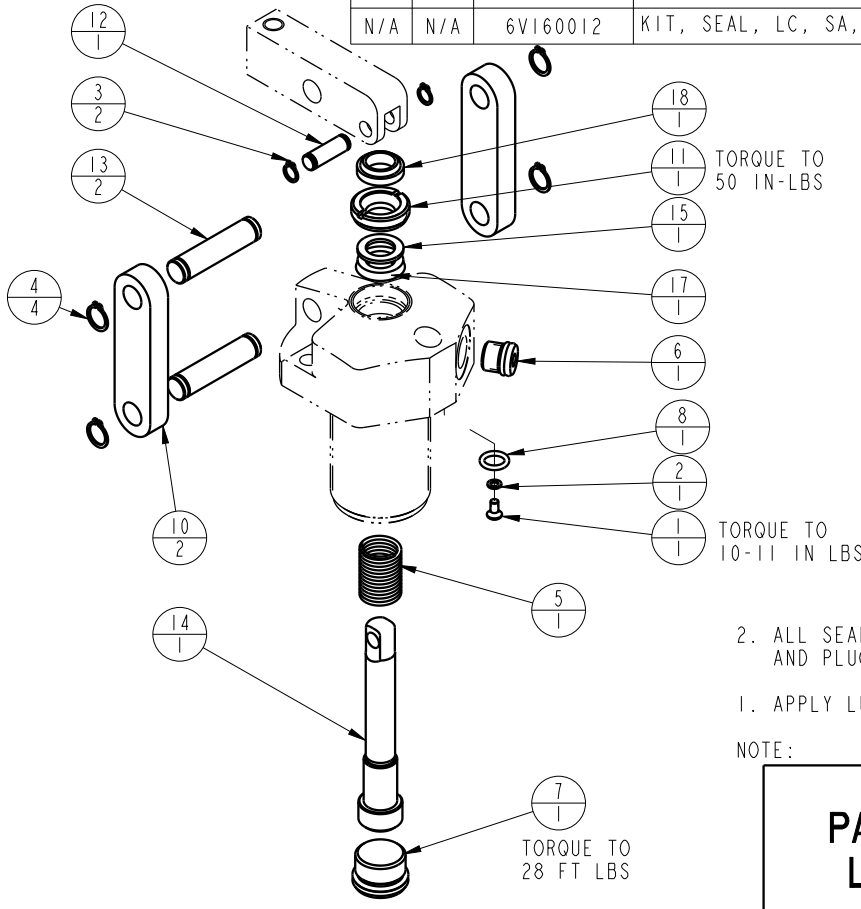



MODEL NO.			MODEL NAME		
16610600			ASSY, LC, SA, 700		
NO.	QTY	PART NO.	DESCRIPTION	STD SEAL KIT	FKM SEAL KIT
1	1	21500019	SCREW, CAP, BTNH, M3 X 6, ALY		
2	1	21500200	WASHER		
3	2	23050021	RING, RTNG, EXT, 0.250	X	X
4	4	23050022	RING, RTNG, EXT, 0.375	X	X
5	1	23350049	SPRING, COMPRESSION		
6	1	30601144	PLUG, SOCH, SAE 4		
7	1	30670002	PLUG, SAE 8, FKM	X	X
8	1	39050042	O-RING, (-011)	X	39051025
9	1	67040065	TAG, LINK ASSY, LC		
10	2	81600022	LINK, LC, 1100 1b		
11	1	81600037	RETAINER, LC, 1100		
12	1	81600077	PIN, LC, SHORT, 1100		
13	2	81600082	PIN, LC, LONG, 1100		
14	1	81600113	PLUNGER, LC, SA, 700/3 KN		
15	1	39F54006	BU RING, (-205)	X	X
17	1	39H52040	SEAL, BEVEL, 7/16 x 1/8 x 11/16	X	39V52032
18	1	39V53026	WIPER, SNAP-IN, (7/16)	X	X
N/A	N/A	60160012	KIT, SEAL, LC, SA, 700	NOTED	
N/A	N/A	6V160012	KIT, SEAL, LC, SA, 700, FKM		NOTED



2. ALL SEALS, BU RINGS, RETAINING RINGS, O-RINGS, AND PLUGS ARE INCLUDED IN THE SEAL KIT.
 1. APPLY LUBRICANT TO ALL SEALS PRIOR TO ASSEMBLY.
 NOTE:

PARTS LIST	 VEKTEK, INC. 1334 E. SIXTH AVE. P.O. BOX 625 EMPORIA, KS. 66801 U.S.A.	
	ASSEMBLIES AFFECTED	PARTS LIST, LC, SA, 700
16610600	SIZE A	REV C

C	5718	RELEASE	NPETERS	6/9/25
REV	IN ACCORDANCE WITH ECN	EFFECTIVE DATE	REVISED BY	DATE
DRW BY:	K. ROEMER	DRAWING STATUS: Released		
DATE:	07/30/04	PRODUCTION APPROVED FOR RELEASED STATUS ONLY		